

Page

5318 Chief Brown Lane  
Darrington, Washington 98241-9420

(360) 436-0131  
Fax (360) 436-1511



RESOLUTION #: 7/27/10  
BE IT RESOLVED BY THE TRIBAL COUNCIL  
OF THE SAUK SUIATTLE INDIAN TRIBE  
IN THE STATE OF WASHINGTON

WHEREAS, the Sauk-Suiattle Tribal Council is the governing body of the Sauk-Suiattle Indian Tribe of authority of the Constitution and By-Laws as approved by the Secretary of the Interior on September 17, 1975 and in accordance with the Indian Reorganization Act of June 18, 1934; and

WHEREAS, the Sauk-Suiattle Indian Tribal Council is the duly elected governing body of the Sauk-Suiattle Indian Tribe; and

WHEREAS, the Sauk-Suiattle Indian Tribal Council is charged with the responsibility for the protection of the health, welfare and safety of the members of the Sauk-Suiattle Indian Tribe; and

WHEREAS, the Sauk-Suiattle Tribal Council establishes the annual hunting regulations and hunting seasons; and

WHEREAS, the Sauk-Suiattle Tribal Council has reviewed the 2010-2011 hunting regulations for this year's hunting season; now

THEREFORE BE IT RESOLVED, the Sauk-Suiattle Tribal Council approves the 2010-2011 hunting regulations; now

BE IT FURTHER RESOLVED, that the Sauk-Suiattle Tribal Council does not waive, alter, or otherwise diminish its sovereign immunity, whether express or implied, by virtue of the enactment of this resolution or any administrative or legal action which may arise directly or indirectly from the same, nor does the Sauk-Suiattle Tribal Council waive, alter, or otherwise diminish any rights, privileges, remedies, or services guaranteed by the Point Elliot Treaty; now

BE IT FINALLY RESOLVED, that the Sauk-Suiattle Tribal Council authorizes the Tribal Council Chairman to sign all documents on behalf of the Sauk-Suiattle Tribe and in his absence, the Vice-Chairperson of the Sauk-Suiattle Tribal Council is authorized to sign all documents.

CERTIFICATION

The above resolution was duly approved by the Sauk-Suiattle Tribal Council at a (insert type of meeting) Tribal Council meeting held on July 8<sup>th</sup>, 2010, at which time a quorum was present by a vote of: 4 For 0 Against: 1 Abstain: 2 Absent.

Janice Mabee  
Janice Mabee, Chairman

ATTEST: Nancy A. Decoteau  
Nancy Decoteau, Secretary



5318 Chief Brown Lane  
Darrington, WA 98241

Phone: (360) 436-0131  
Fax: (360) 436-1511

**SAUK-SUIATTLE INDIAN TRIBE  
Hunting Regulations 2010-2011**

Pursuant to the Sauk-Suiattle Hunting Ordinance (SSIT Res. # 07/XX/10), approved on July 8, 2010, the Fishing and Hunting Committee hereby issues the following regulations for the 2010-2011 hunting season: <sup>27d</sup>

**1. General Opening:**

Areas opened by these regulations are only open to hunting in accordance with the Sauk-Suiattle hunting ordinance and all applicable regulations. The purchase and possession of a big game hunting tag signed by the designee and a tribal enrollment card (or Point Elliott Treaty card) authorizes individuals to hunt big game within the open areas described within these regulations. No tag is required for hunting waterfowl or upland game birds; however hunters must possess a Tribal or Point Elliott Treaty identification card (or other Point Elliott Tribal identification card).

**2. General Closures:**

The Sauk-Suiattle Reservation and all other areas within the Tribe's jurisdiction which are posted as closed to hunting of big game animals unless those areas are specifically opened by regulation.

**3. Permits/Photo ID Required**

While hunting, all persons hunting under the authority of the Sauk-Suiattle Indian Tribe must have in his or her possession:

1. Sauk-Suiattle tribal identification card, Point Elliott tribal identification card, or an identification card issued by a signatory tribe of the Point Elliott Treaty, and;
2. Appropriate tags for the game species they are authorized to hunt.

Possession means on the hunter's person or in his/her immediate control. Possession of a tribal enrollment card (or Point Elliott Treaty card) and a big game hunting tag allows eligible tribal members to legally hunt subject to the limitations of the Sauk-Suiattle hunting ordinance and 2010-2011 tribal hunting regulations.

#### **4. Designated Hunter**

A tribal member may elect to have a designated hunter who hunts on their behalf in accordance with the Sauk-Suiattle Indian Tribe hunting ordinance and tribal hunting regulations. The designated hunter must be:

1. In possession of a Sauk-Suiattle Tribal Designated Hunter identification card to be renewed annually, Point Elliott Tribal identification card, or an identification card issued by a signatory tribe of the Point Elliott Treaty; and,
2. In possession of a big game tag signed by the designee with the designee's tribal enrollment identification number clearly marked. A Sauk-Suiattle big game hunting tag constitutes a tribal hunting permit.

#### **5. Big Game Hunting Tags**

Big game hunting tags are required for hunting big game (deer, elk, bear, cougar, and mountain goat). Tags are not required for small game and birds. Tags shall be obtained either in person or by immediate family member through a written request for tag from the Natural Resource Director and Chief of Law Enforcement (or their designees) at the Sauk-Suiattle Natural Resource Department or Police Department during regular business hours.

All tribal hunting tags must be signed by one of the following: Natural Resources Director, Chief of Law Enforcement or their designees. Either the hunter or immediate family member must present Point Elliott identification or tribal enrollment card (or photocopy) at the time the tag is requested. An annual non-refundable fee of \$5.00 will be charged to all tribal hunters prior to the issuance of each big game hunting tag. Sauk-Suiattle tribal elders (i.e. 45 years or older) are exempt from the non-refundable fee.

#### **6. Tags/Harvest Report Requirements**

Immediately after any big game animal has been killed, the person who has made the kill must remove from the tag, the designated notches corresponding to the month and day of the kill and attach the tag securely to the carcass. Game tags, with the harvest report filled in by the hunter and the date of kill notched out, must be turned into the Natural Resource Director or his designee, within one week after the date such animals were taken.

To be issued additional big game hunting tags for the same species (e.g. 2<sup>nd</sup> deer tag), the original tag must first be returned to the Natural Resource Director or his designee, in his absence.

**ALL TAGS, WHETHER A BIG GAME ANIMAL WAS HARVESTED OR NOT,  
MUST BE RETURNED TO THE NATURAL RESOURCES DEPARTMENT BY  
APRIL 30, 2011.**

**FAILURE TO TURN IN HUNTING TAGS AND/OR PERMITS WILL RESULT  
IN A FINE OF \$50.00 AND/OR SUSPENSION OF HUNTING PRIVILEGES FOR  
THE FOLLOWING YEAR.**

**7. Seasonal Bag Limits**

| SPECIES                                           | SEX                                                               | SEASON                                                             | BAG LIMIT                             | GAME MANAGEMENT UNITS OPEN <sup>1</sup>                               | GMU CLOSURES, RESTRICTIONS & EXCEPTIONS <sup>2</sup>                                                                                                                                                                                                                                                                                                                                                                                                                                                                                                   |
|---------------------------------------------------|-------------------------------------------------------------------|--------------------------------------------------------------------|---------------------------------------|-----------------------------------------------------------------------|--------------------------------------------------------------------------------------------------------------------------------------------------------------------------------------------------------------------------------------------------------------------------------------------------------------------------------------------------------------------------------------------------------------------------------------------------------------------------------------------------------------------------------------------------------|
| Deer                                              | Either Sex<br>-----<br>Buck w/<br>visible<br>antlers <sup>3</sup> | Aug. 15 to Dec.<br>31, 2010<br>-----<br>Jan. 1 to<br>Feb. 28, 2011 | 4 per<br>hunting<br>season            | 407, 410, 418, 426, 437,<br>448, 450, 454, 460, 466,<br>485, 490, 653 | 437 – 2 point minimum buck or antlerless – one/household                                                                                                                                                                                                                                                                                                                                                                                                                                                                                               |
| Elk                                               | Either Sex<br>-----<br>Bull w/<br>visible<br>antlers <sup>3</sup> | Aug. 15 to<br>Dec. 31, 2010<br>-----<br>Jan. 1 to<br>Feb. 28, 2011 | 2 per<br>general<br>hunting<br>season | 407, 410, 418, 426, 437,<br>448, 450, 454, 460, 466,<br>485, 490, 653 | 418 - General conservation closure is still in effect for 2009-10 hunting season. Special permit required for limited bull hunt <sup>4</sup><br>418A (Acme Elk Damage Subunit) – One elk/household. Special permit required for limited any elk hunt on private agricultural lands <sup>5</sup><br>437 & 448 – At the discretion of the Natural Resources Director, harvest of radio collared elk may be permitted in GMUs 437 & 448 to address agricultural damage issues.<br>466, 485 & 653 - Bull only. One elk/household (Sept. 15 – Dec. 31 2010) |
| Cougar                                            | Either sex                                                        | Aug. 15, 2010 to<br>Mar. 29, 2011                                  | 1 per<br>general<br>hunting<br>season | 407, 410, 418, 426, 437,<br>448, 450, 454, 460, 466,<br>485, 490, 653 | Hunters are strongly encouraged to avoid shooting a cat with kittens                                                                                                                                                                                                                                                                                                                                                                                                                                                                                   |
| Black Bear                                        | Either sex                                                        | Aug. 15, 2010<br>to<br>Feb. 28, 2011                               | 2 per<br>general<br>hunting<br>season | 407, 410, 418, 426, 437,<br>448, 450, 454, 460, 466,<br>485, 490, 653 | Hunters are strongly encouraged to avoid shooting a sow with a cub                                                                                                                                                                                                                                                                                                                                                                                                                                                                                     |
| Big Horn Sheep                                    | Either sex                                                        | Aug. 15, 2010<br>to<br>Nov. 30, 2011                               | 1 per<br>general<br>hunting<br>season | 407, 410, 418, 426, 437,<br>448, 450, 454, 460, 466,<br>485, 490, 653 | Big horn sheep tag(s) will be issued at the discretion of the Natural Resources Director. Sheep harvest during the 2008-2009 season will be limited to ceremonial harvest.                                                                                                                                                                                                                                                                                                                                                                             |
| Mountain Goat                                     | Billy Only                                                        | Aug. 15, 2010<br>to<br>Dec. 31, 2011                               | 1 per<br>general<br>hunting<br>season | 407, 410, 418, 426, 437,<br>448, 450, 454, 460, 466,<br>485, 490, 653 | One mountain goat tag will be issued at the discretion of the Natural Resources Director. Goat harvest during the 2010-2011 season will be limited to ceremonial harvest within GMUs 418, 426, 437, 448 & 450.                                                                                                                                                                                                                                                                                                                                         |
| Waterfowl <sup>6</sup>                            | Either sex                                                        | Aug. 15, 2010<br>to<br>Jan. 31, 2011                               | 15 per day<br><br>5 Geese per<br>day  | 407, 410, 418, 426, 437,<br>448, 450, 454, 460, 466,<br>485, 490, 653 |                                                                                                                                                                                                                                                                                                                                                                                                                                                                                                                                                        |
| Upland Game Birds <sup>6</sup><br>(except Turkey) | Either sex                                                        | Aug. 15, 2010<br>to<br>Jan. 17, 2011                               | 10 per day                            | 407, 410, 418, 426, 437,<br>448, 450, 454, 460, 466,<br>485, 490, 653 | Harvest of sage grouse, sharp tailed grouse and mountain quail is currently closed due to limited population size.                                                                                                                                                                                                                                                                                                                                                                                                                                     |
| Turkey <sup>6</sup>                               | Toms and<br>jakes only                                            | May 1, 2010 to<br>Dec. 1, 2011                                     | 3 per season                          | 407, 410, 418, 426, 437,<br>448, 450, 454, 460, 466,<br>485, 490, 653 |                                                                                                                                                                                                                                                                                                                                                                                                                                                                                                                                                        |

- 1 - Traditional hunting areas not currently opened by these regulations including (but not limited to) all or portions of Game Management Units 203, 218, 231, 242, 244, 245, 249 &/or 335 may be opened for big game harvest during the 2010-2011 hunting season.
- 2 - The hunting and fishing committee will immediately notify the tribal community if there are any GMU closures.
- 3 - Male deer or elk visible antler point must be at least an inch long.
- 4 - A limited bull elk hunt for Point Elliott Tribes in 2010 will provide the Sauk-Suiattle Tribe one to four bull tags. Hunters must comply with Point Elliott limited bull hunt guidelines and any provisions of private landowner agreements. The Natural Resources Director will designate the hunter(s) and the meat is to be used for ceremonial/community purposes.
- 5 - Upon agreement with landowners in the Acme Elk Damage Subunit of GMU 418 (see attached map), the Natural Resources Director may implement a limited "any elk" hunt on private agriculture lands to address crop damage.
- 6 - No tag is required for hunting waterfowl or upland game birds; however hunters must possess a SSIT tribal or Point Elliott Treaty identification card.

**IT IS RECOMMENDED THAT HUNTERS HAVE A COPY OF THE HUNTING REGULATIONS IN POSSESSION WHILE HUNTING.**

**7. Ceremonial and Subsistence Hunts**

Ceremonial and subsistence hunting outside of the general hunting season can be authorized at the discretion of the Natural Resources Director, or his designee.

**8. Definitions of Upland Game Birds**

Forest grouse (blue, ruffed, and spruce), sage and sharp tailed grouse, ptarmigan, band-tailed pigeon, partridge (chukar and gray), quail (mountain, California, and bobwhite), pheasant, turkey (turkeys with visible beards only).

**9. Definitions of Waterfowl**

All ducks, geese, brant, and coots.

**10. Restrictions**

**Modern Firearms**

- No Person shall hunt for big game with a firearm with a bore less than a caliber of .24 (6mm), except .22 caliber center fire rifle can be used to hunt cougar.
- Handguns must have a minimum barrel length of 4 inches per manufacturer's specifications and fire center fire cartridges with a minimum caliber of .24 (6mm).
- A rifle cartridge with a bullet weighing less than 85 grains, or that develops less than 900 ft. pounds of energy at 100 yards, or
- A rifle cartridge containing a bullet other than a mushrooming or expanding type designed for big game.
- A 22 cal. Rifle or handgun, center fire pistol, or 410 or larger gauge shotgun, may be used to hunt small game.

**Shotguns**

- Shotguns deer, cougar and bear can be hunted with 20 gauge to 10 gauge shotgun shooting slugs or buckshot size #1 or larger.
- Other big game may be hunted with a 10 or 12 gauge shotgun using slugs.
- Steel shot is REQUIRED for hunting water birds. No lead shot is allowed.

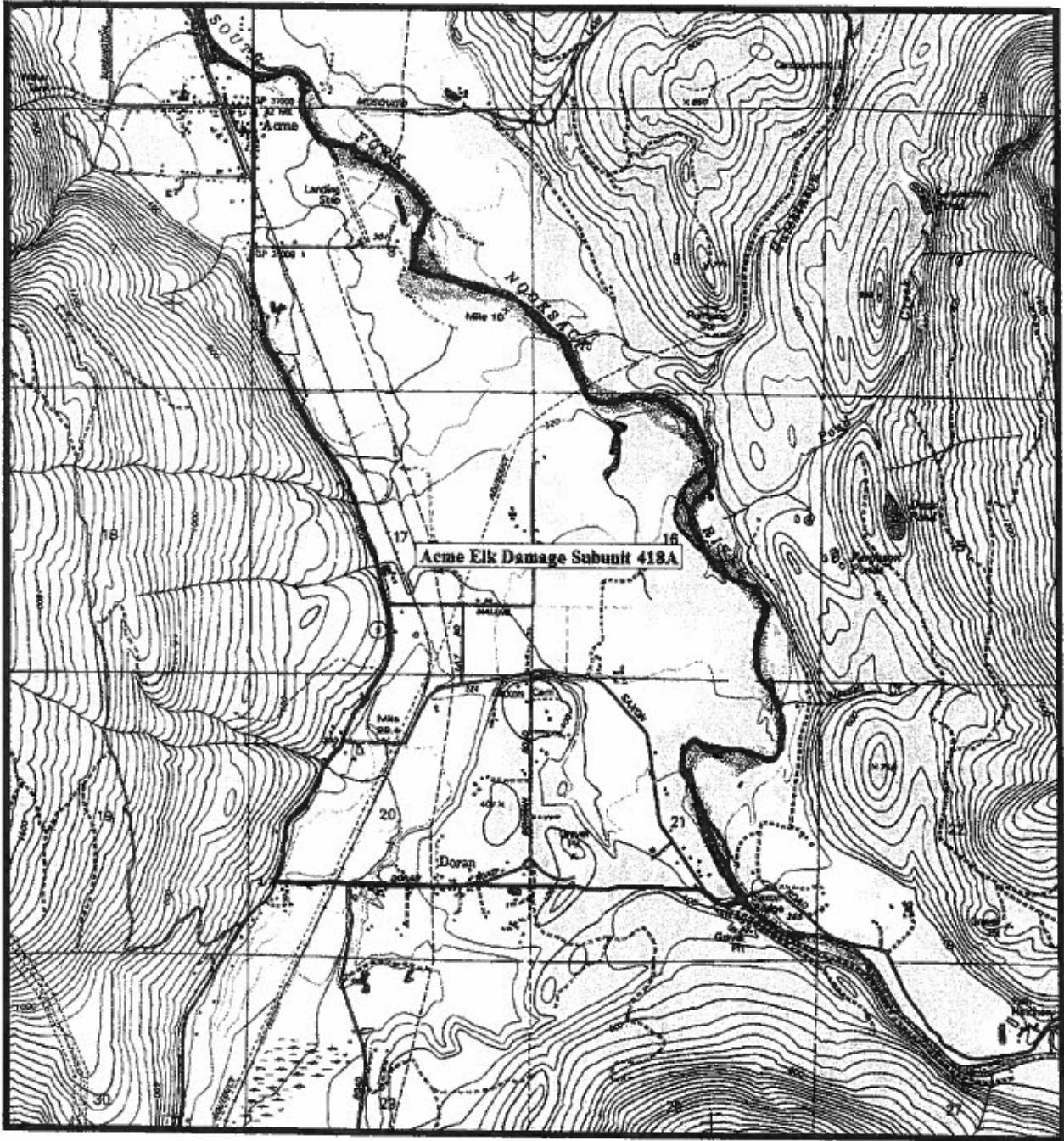
**Archery**

- A bow shall have at least 40 pounds of draw at 28 inches with a draw weight reduction (let off) not to exceed 85%.
- Broadheads must be unbarred and completely closed at the back end of the blade(s) by a smooth, unbroken surface.
- Arrows must be 20" or longer and weigh a minimum of 300 grains and be a minimum 6 grains/lb. of draw weight.

**11. Open Areas/Area Restrictions:**

Except for restricted areas outlined under item 6 of these regulations, all open Washington State Game Management Units (see attached map) and traditional areas identified by the Sauk-Suiattle Indian Tribe, including, but not limited to, those open and unclaimed lands covered by the Point Elliott Treaty, are open to hunting. Hunting is explicitly prohibited on private lands posted "NO HUNTING" or "NO TRESSPASSING," unless verbal or written authorization has been provided.

## Acme Elk Damage Hunt Subunit 418A



**Subunit 418A Boundary Description:** North from SR 9 - Doran Road intersection to South Fork Nooksack River Bridge, along west bank of South Fork Nooksack River S.E. and S. to Saxon Road Bridge, follow Saxon Road NW to a point due W. of Doran Road, from this point W. to Doran Road - SR 9 intersection.

**These regulations were approved as amended on the 8<sup>th</sup> day of July, 2010.**

CC: Washington Department of Fish and Wildlife, SSIT Police Department

*Public Notice: Please note that Washington State fish and wildlife enforcement personnel follow and enforce the State Supreme Court ruling, State v. Buchanan, 138 Wash.2d 186, 978 P.2d 1070, Wash., 1999 that expressly states: "The geographic area available for hunting would certainly include the territory ceded to the United States and described in article I of the Treaty of Point Elliott, and may include other areas if those areas are proven to have been actually used for hunting and occupied by the [Nooksack Tribe] over an extended period of time. Id. at 207".*

*If you are cited by state enforcement personnel, please inform the Sauk-Suiattle Indian Tribe's Natural Resources Department Director immediately, with the following information: Date, Time, Location (GMU), and species.*